

DAIMLER ARMOURED CAR

TECHNICAL HANDBOOK - MODIFICATION INSTRUCTION

Preparation for fitting wireless set C12

SUMMARY

1. To enable the Wireless set C12 to be fitted in place of the Wireless set No 19 the vehicle must first be modified in accordance with this instruction. The replacement of the wireless equipment is covered in Comms Inst J 617, Instr No 1.

Estimated time required to complete this modification: 1 man-hour.

2. Items affected:-

MG ammunition carrier.  
Stud positions.

3. Action required by:-

(a) Units affected:-

- (i) When instructed to install the Wireless set C12, enter details of this modification in the AB 413 of each vehicle affected.
- (ii) Demand the necessary stores and on receipt request REME to carry out this modification, ensuring that the stores accompany the vehicle into workshops.

(b) Units authorized to carry out unit or field repairs:-

- (i) When requested by units, carry out this modification in accordance with the details given below.
- (ii) Endorse the modification details in the AB 413 of each vehicle modified.

(c) Units authorized to carry out base repairs:-

- (i) When instructed, demand the necessary stores, and on receipt carry out this modification.
- (ii) Enter and endorse the modification details in the AB 413 of each vehicle modified.

4. Priority:-

NOT TO BE IMPLEMENTED WITHOUT FURTHER WAR OFFICE AUTHORITY.

5. Stores required:-

The following stores will be demanded through the normal channels, quoting on the indent 'EMER Wh Veh H 257 Mod Instr No 7', together with the registration number(s) of the vehicle(s) affected.

Note: Stores will be demanded as a set and NOT as individual items.

<u>VAOS,</u> <u>Section</u>	<u>Part No</u>	<u>Designation</u>	<u>Qty</u> <u>per veh</u>
LV5/BM	Mod/19352	Wireless installation, vehicle modification set comprising:-	1
-	FV 246571	Support r.h. (1)	
-	FV 246572	Support l.h. (1)	
G1	XB 14198	Nuts, B.S.F., steel, hex, $\frac{3}{8}$ in. rustproof (2)	
G1	XB 13109	Screws, B.S.F., steel, hex.hd., $\frac{3}{8}$ in. x 1 in. (2)	
G1	GA 19163	Washers, lock, shakeproof, $\frac{3}{8}$ in. external type 11 (2)	
G1	GA 19433	Studs, B.S.F., projection welding, $\frac{1}{4}$ in. x $1\frac{1}{8}$ in. (3)	
G1	GA 19419	Ferrules, projection welding, $\frac{1}{4}$ in. (3)	

6. Stores to be discarded: Nil.

DETAIL

7. In order to prepare the vehicle to accept the Wireless set C12, it is necessary to modify the vehicle in accordance with the following details. These involve repositioning an MG ammunition carrier and the fixing of three additional studs.

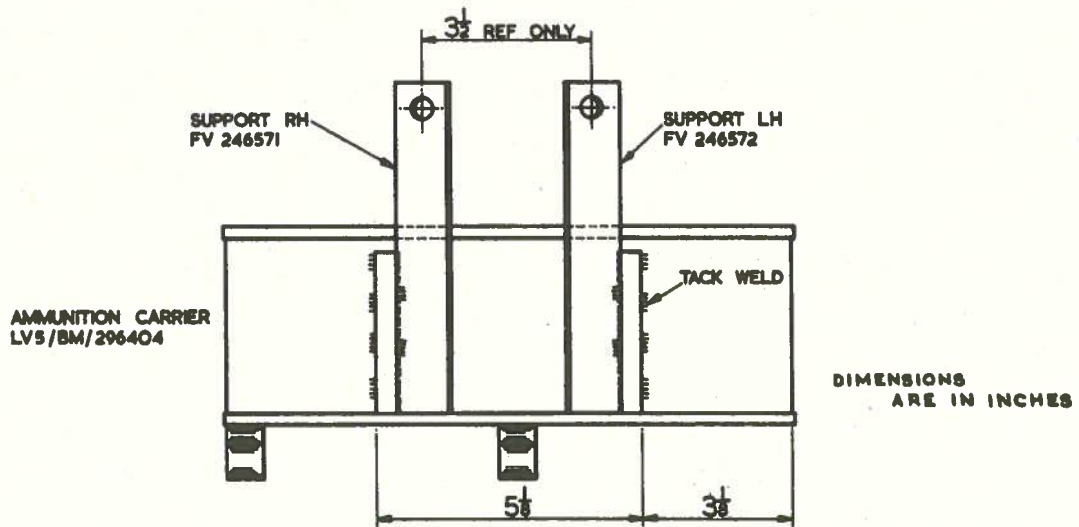
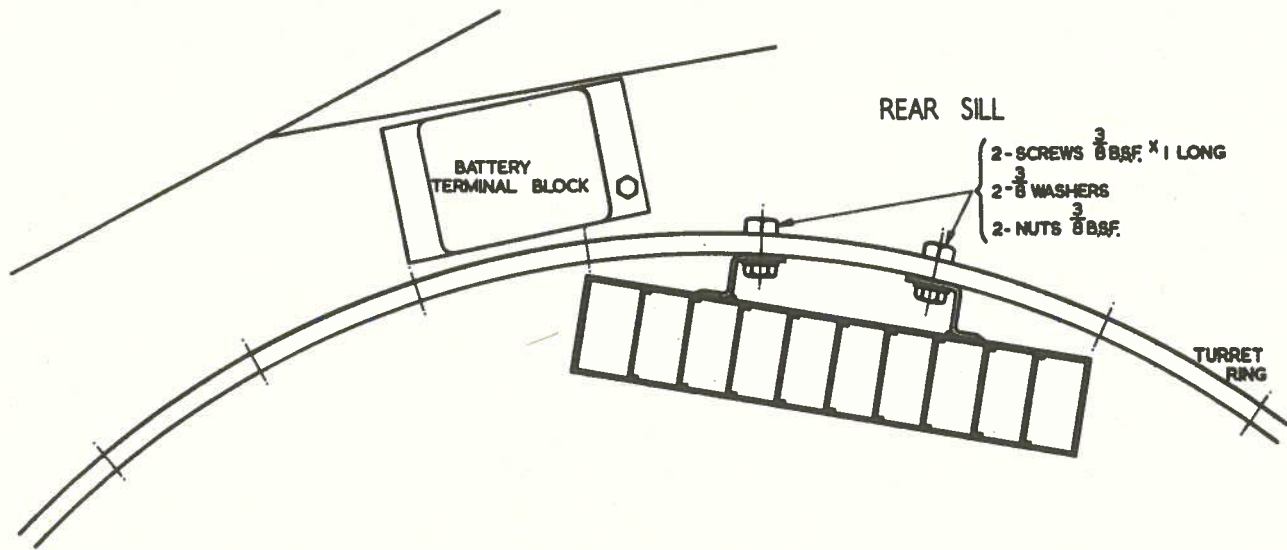
Note: This instruction has been written on the assumption that stud welding equipment is available.

Proceed as follows:-

8. (a) Remove the MG ammunition carrier from the right-hand wall of the turret by unscrewing its three fixing nuts, these nuts will be replaced, as they are used also to secure an external bracket.
- (b) Remove and discard the securing bracket which is riveted to the carrier.
- (c) Weld the right-hand support (FV 246571) and the left-hand support (FV 246572) to the carrier as shown in Fig 1.
- (d) Secure this assembly to the turret ring as shown in Fig 1, two replacement  $\frac{3}{8}$  in. B.S.F. nuts and screws are provided should the original nuts and screws become damaged during removal.

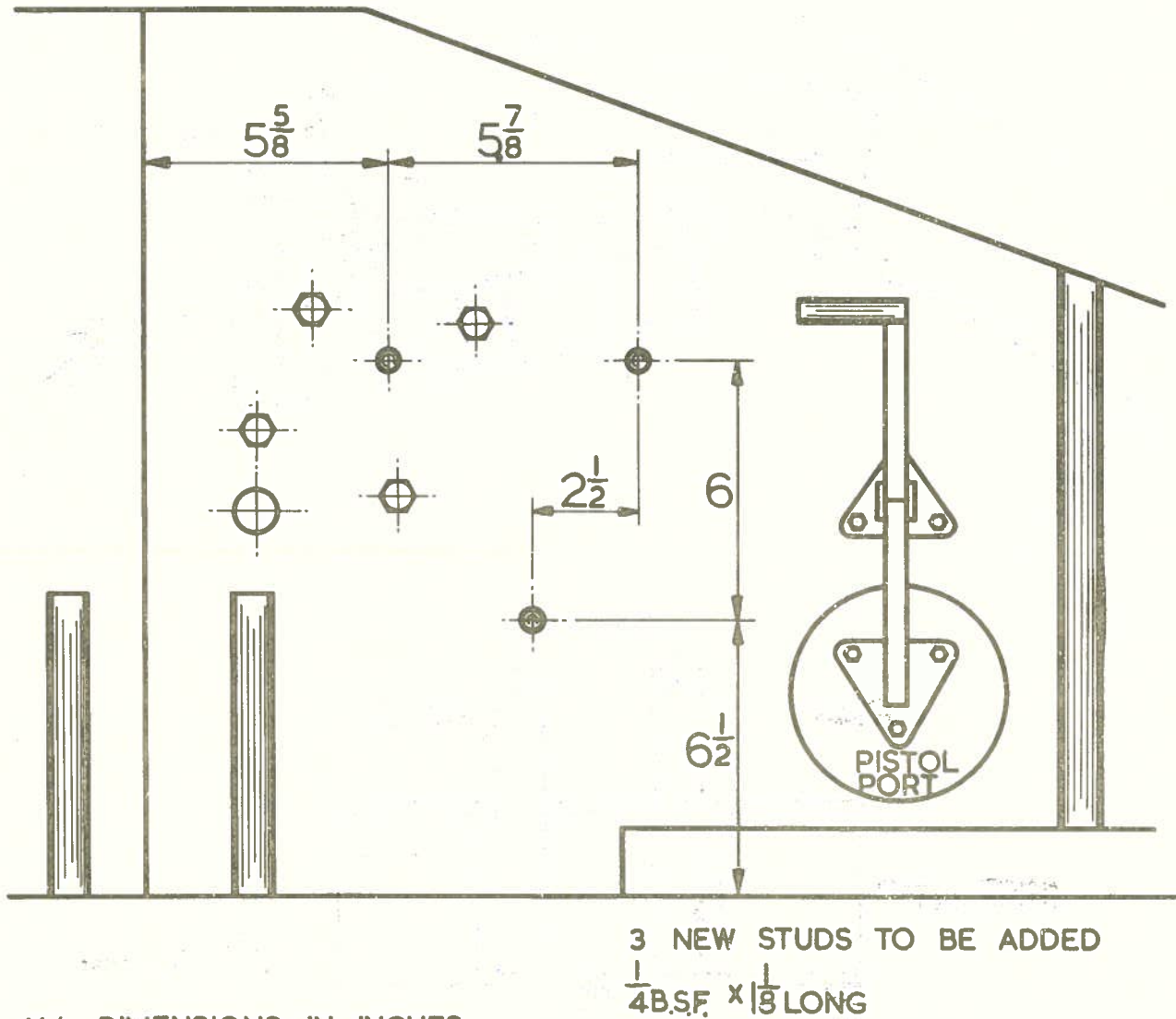
9. Weld three  $\frac{1}{4}$  in. B.S.F. x  $1\frac{1}{8}$  in. studs to the right-hand wall of the turret as shown in Fig 2. When marking out use the template in Fig 3 (to be made up locally) to ensure that the stud positions will give adequate clearance around the aerial tuning unit which will later be fitted on the studs. The template should be fitted over the studs when welded to check accuracy of positioning.

WARNING: When the electric stud welding equipment is being used, it is essential that the earth lead should be connected to the turret of the vehicle, to avoid damage to the turret race by passing heavy currents through it.



VW  $\frac{H-257 M7}{1-1}$

Fig 1 - Fixing of ammunition carrier



ALL DIMENSIONS IN INCHES

vw  $\frac{H-257 M7}{1-2}$

Fig 2 - Position of studs turret r.h. wall



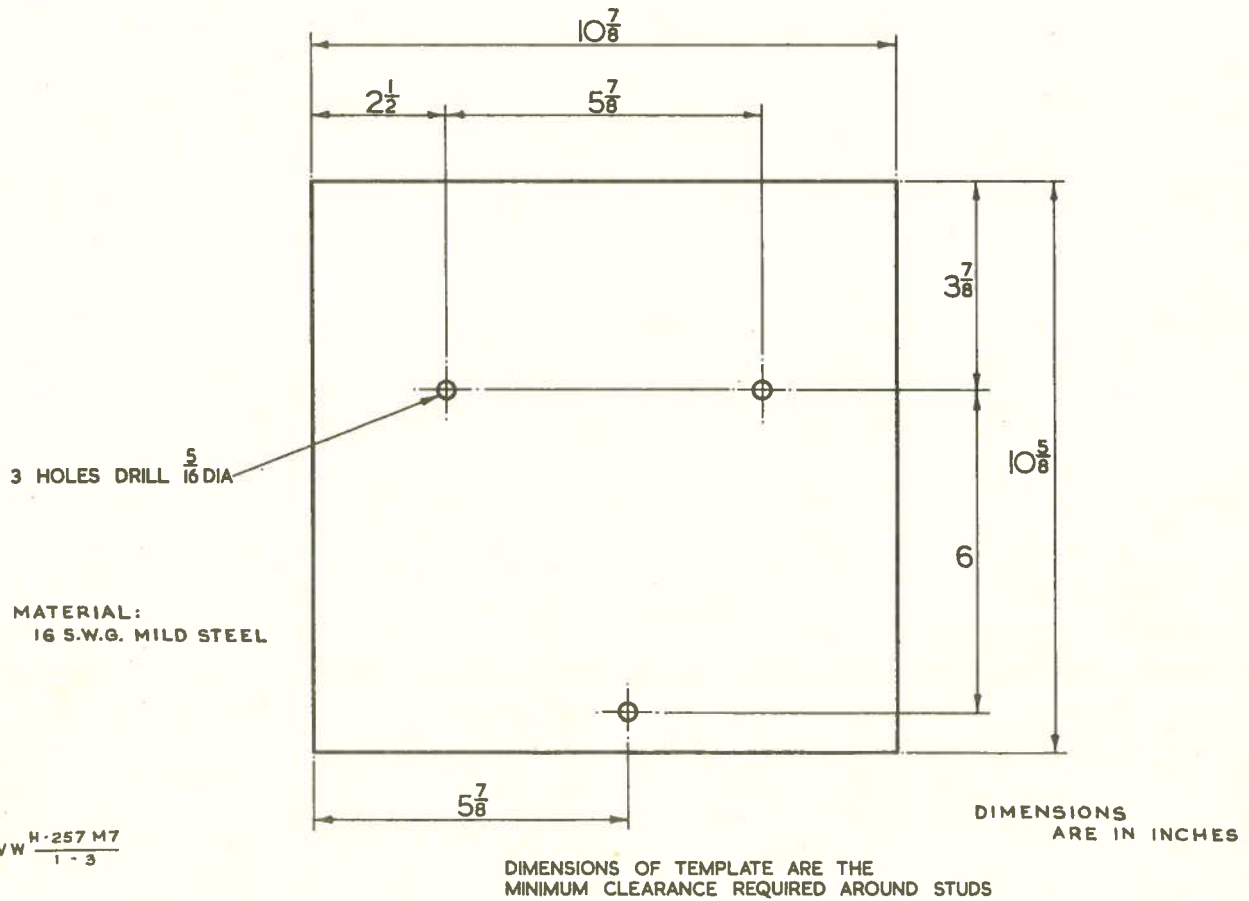
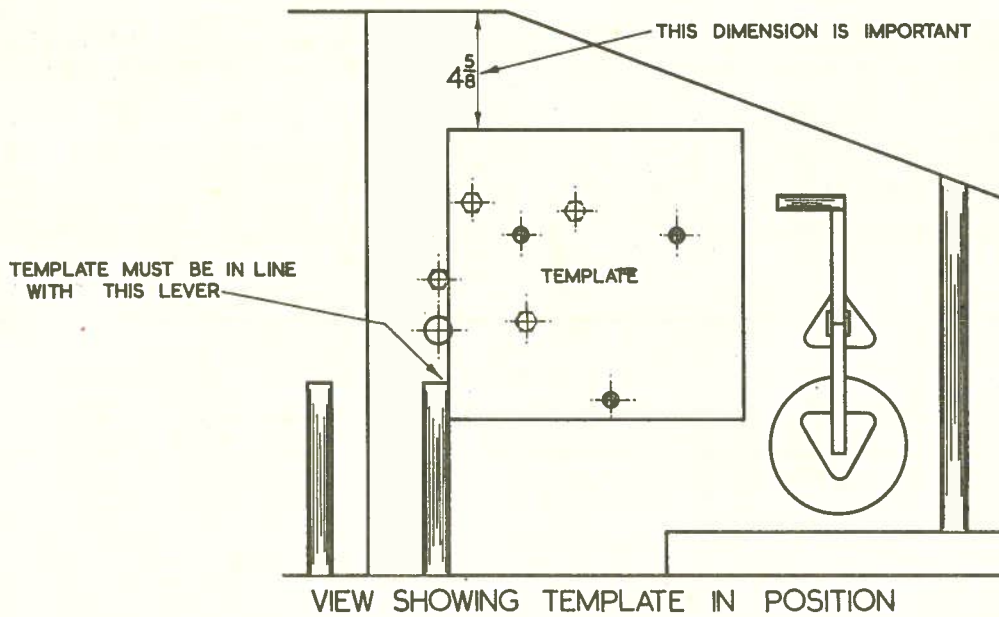


Fig 3 - Stud positioning template

RESTRICTED